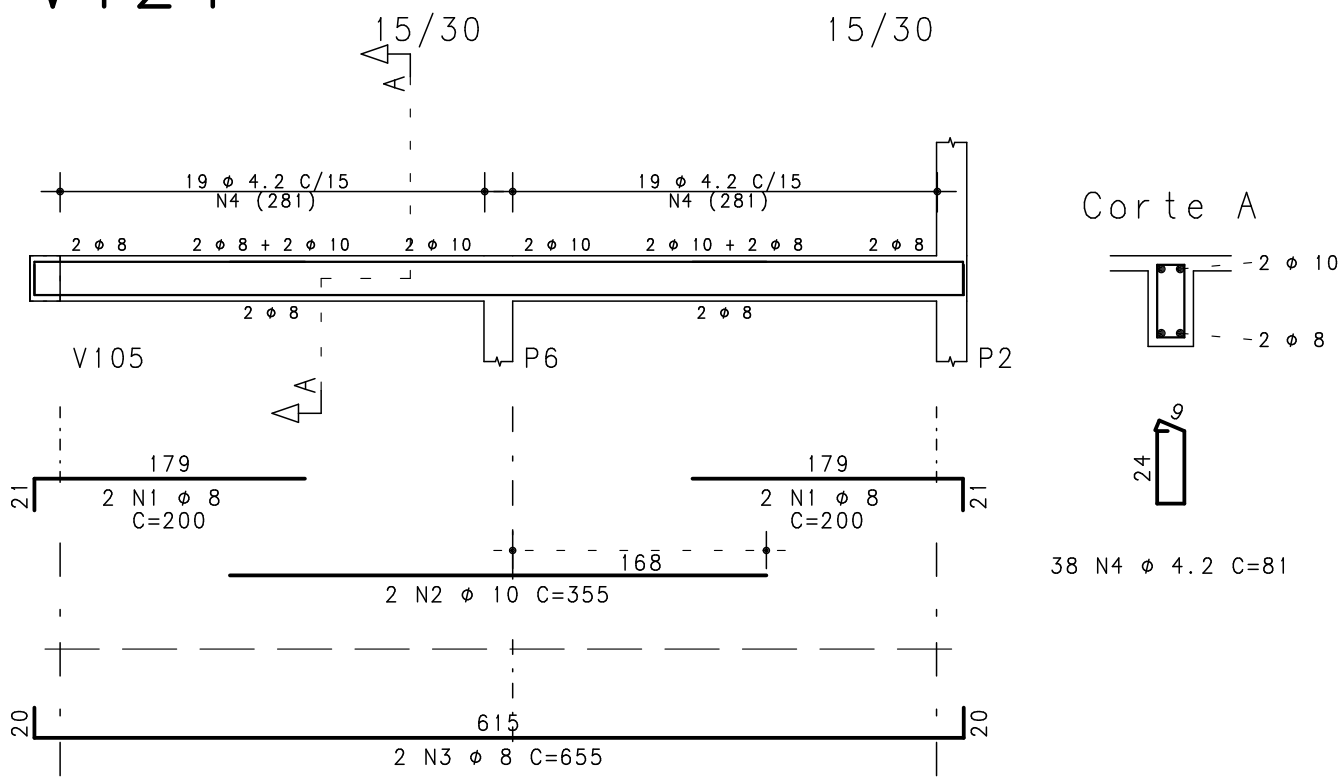
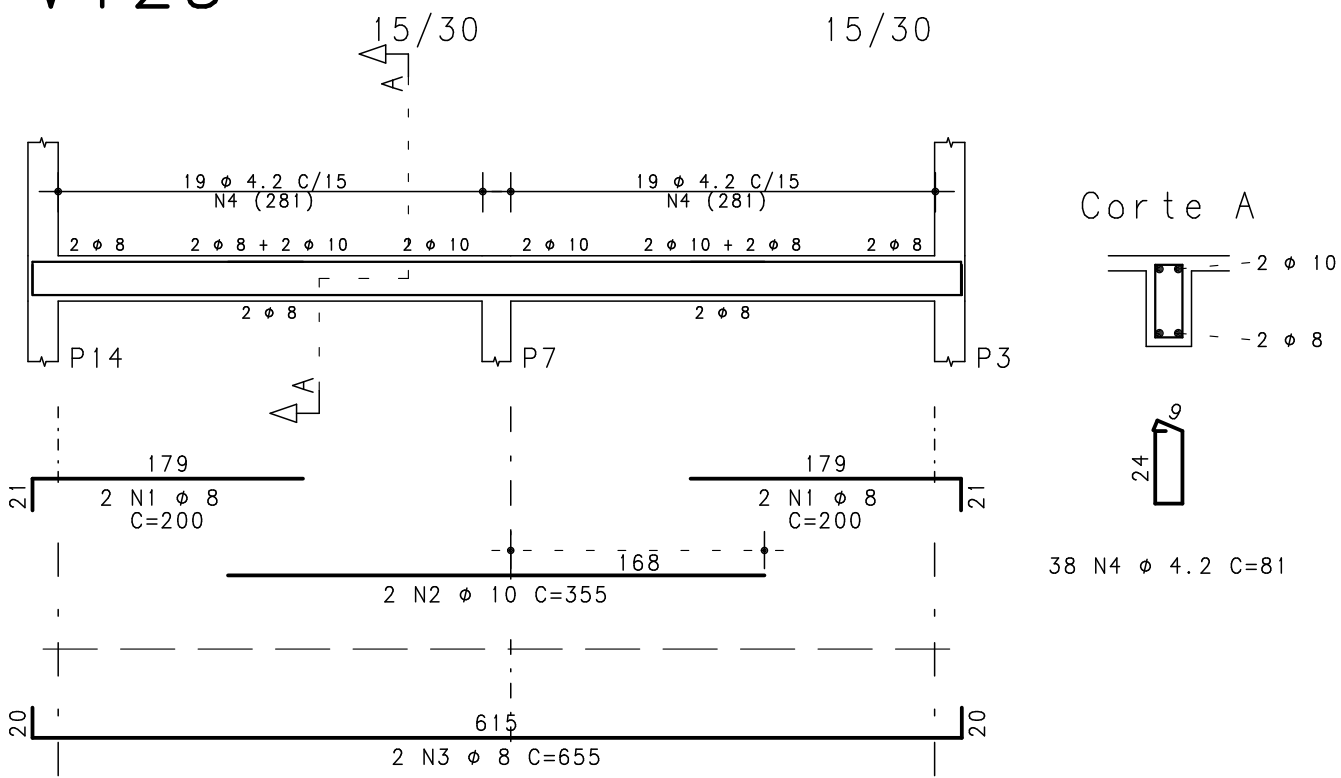


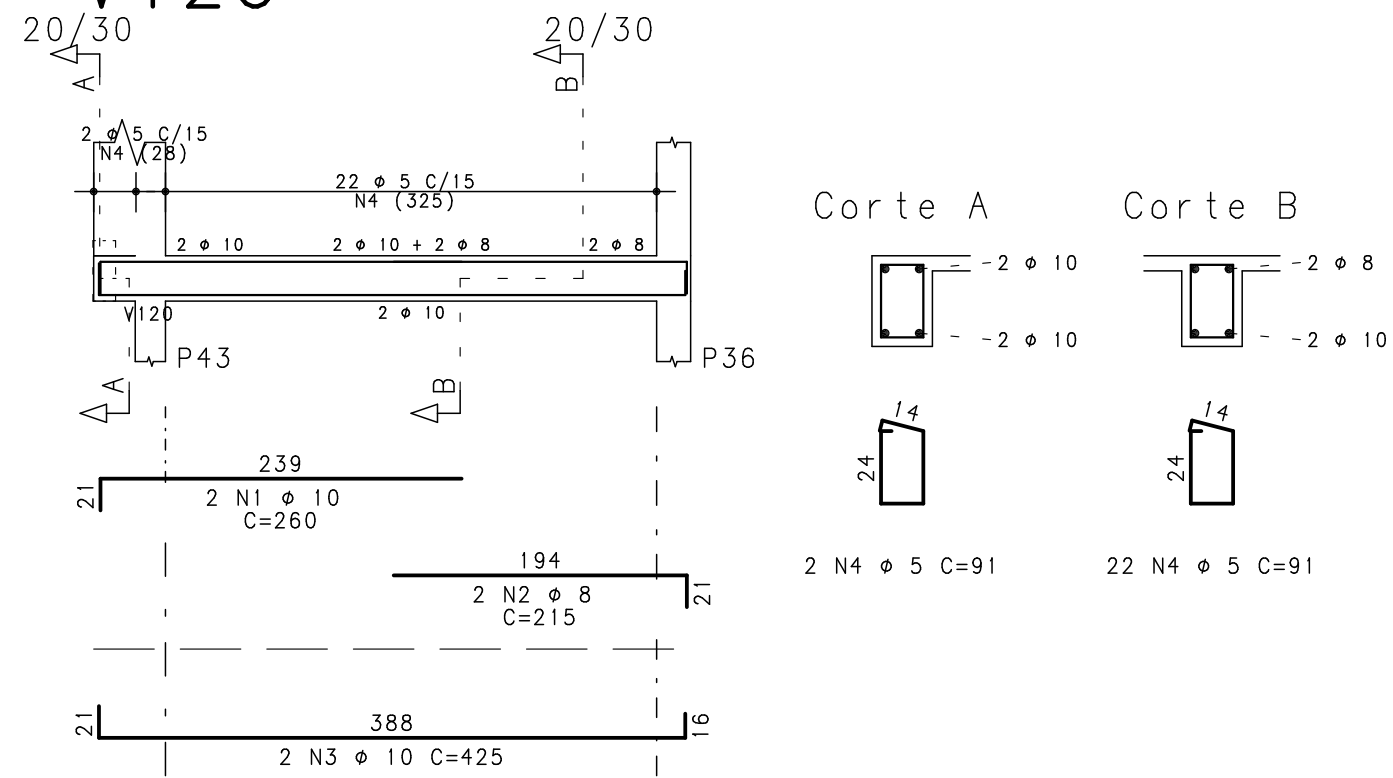
V124



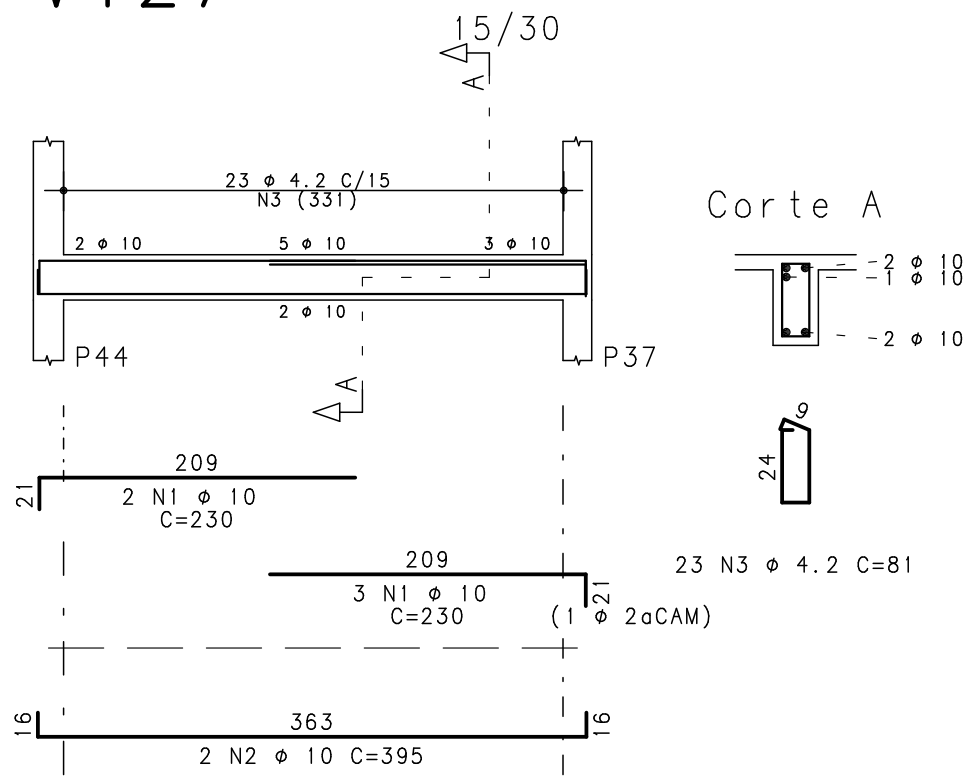
V125



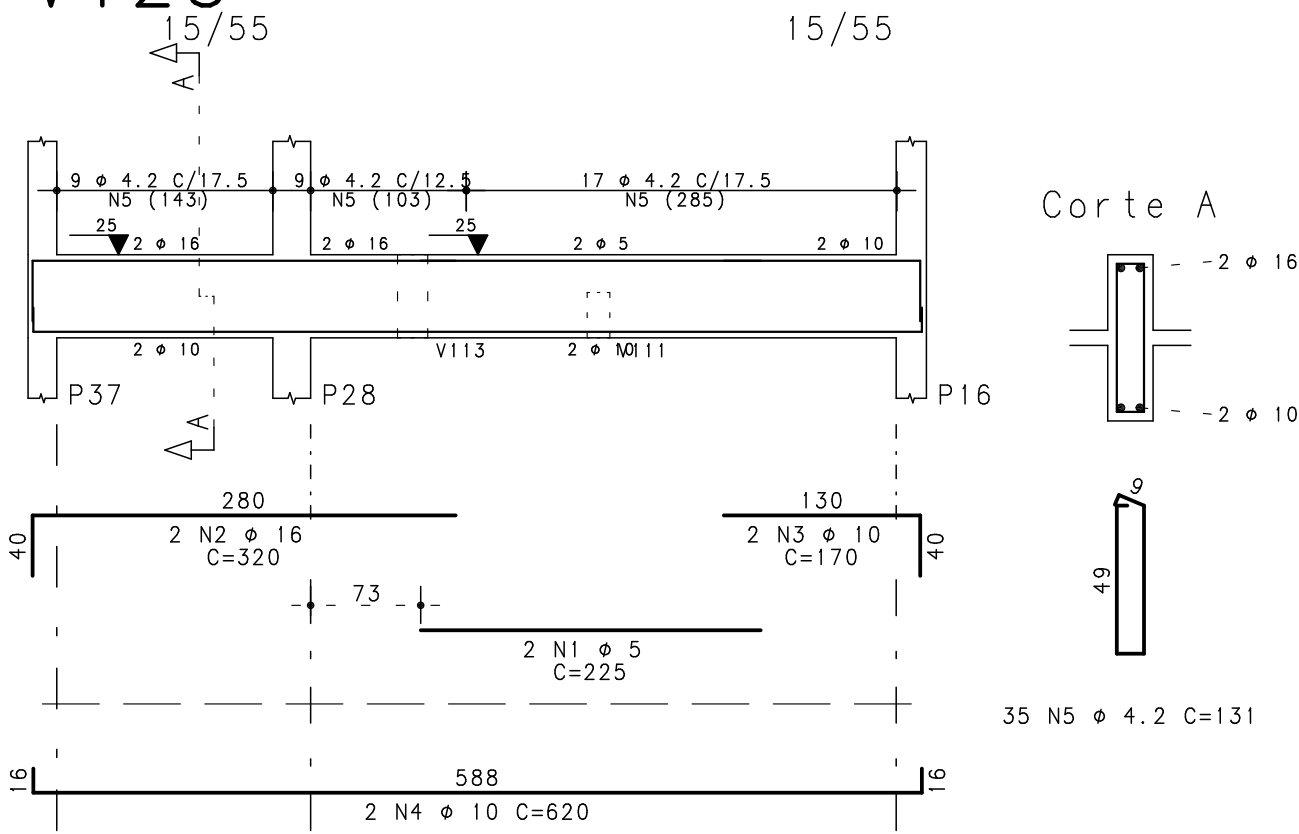
V126



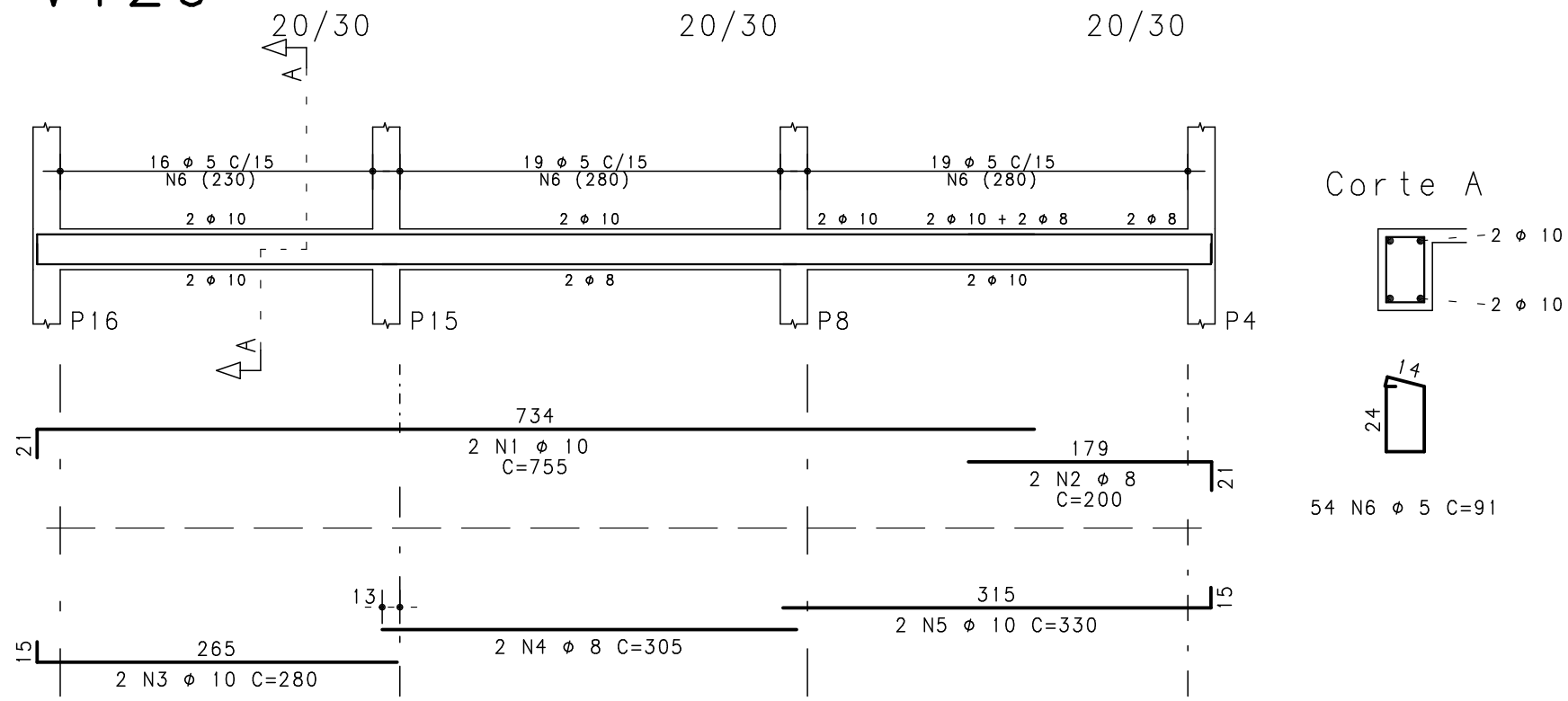
V127



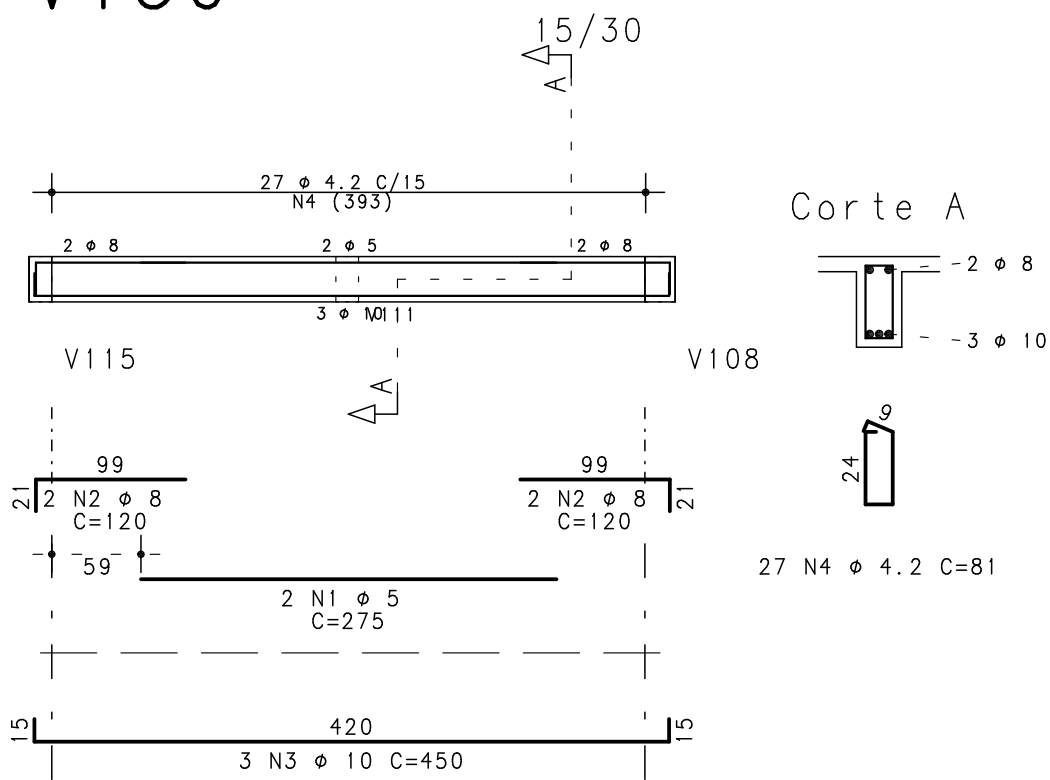
V128



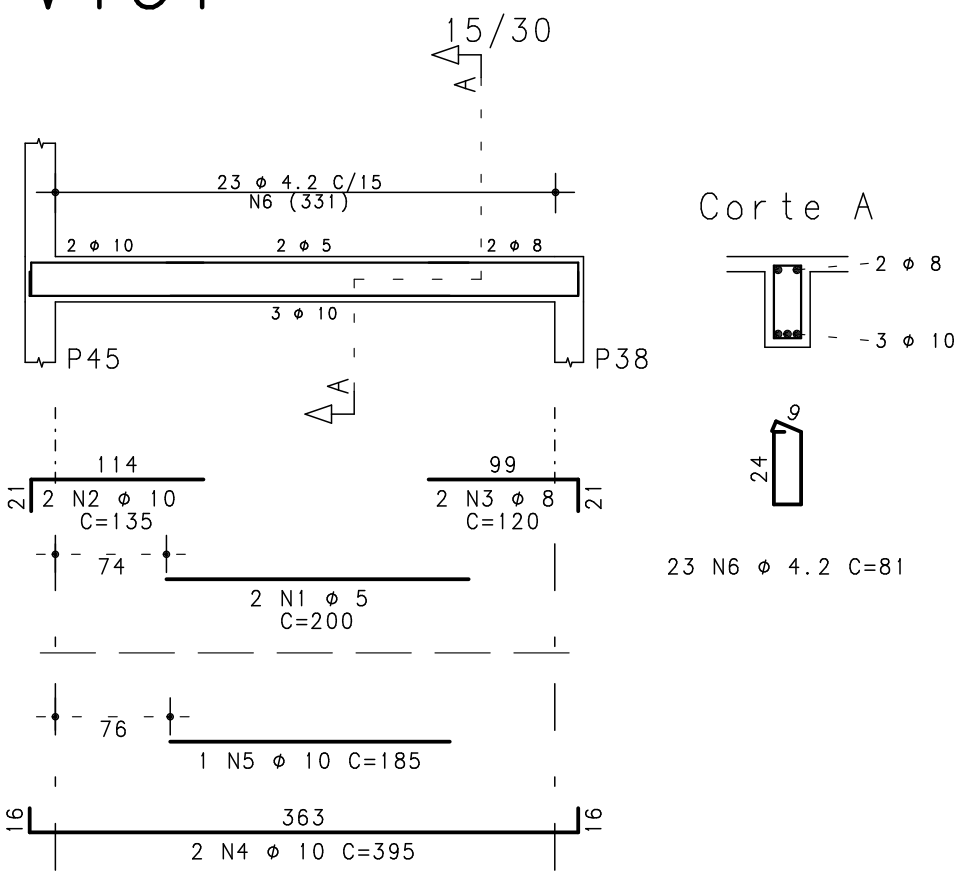
V129



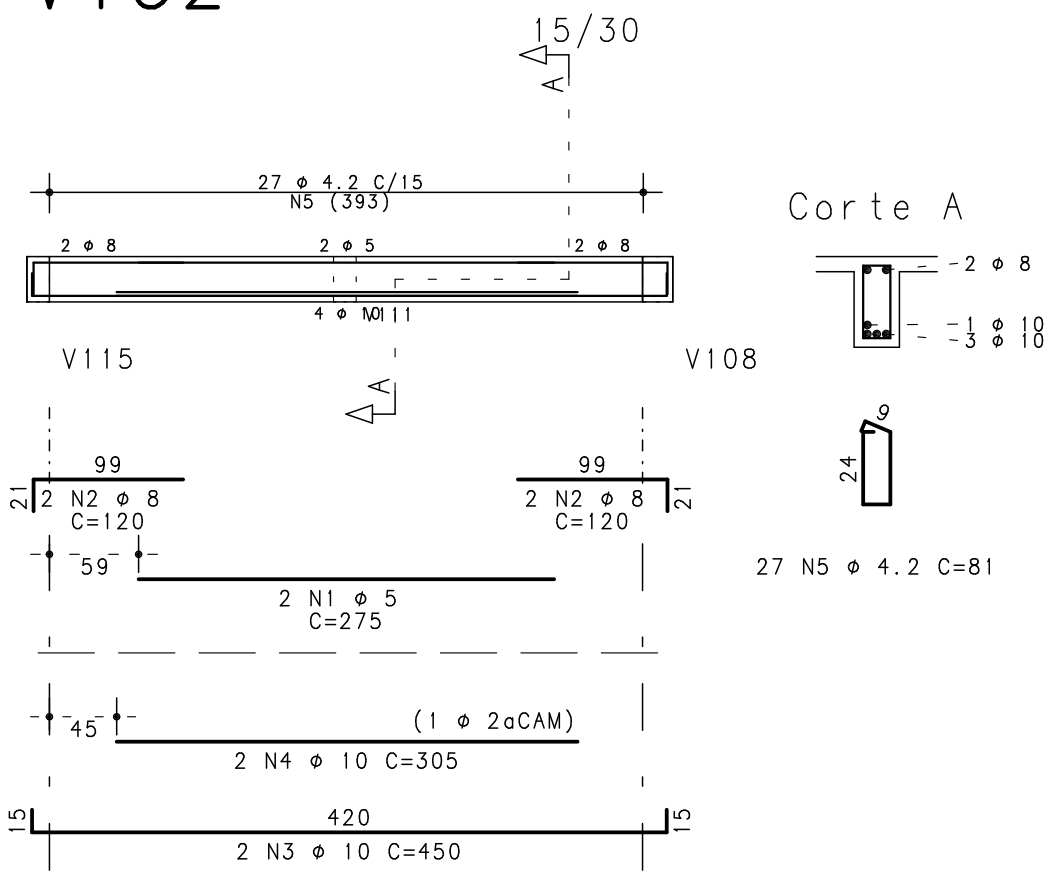
V130



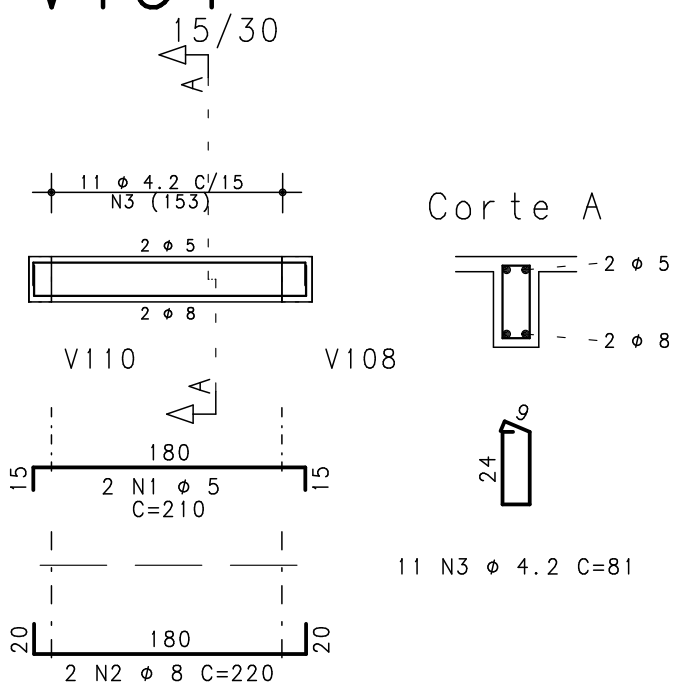
V131



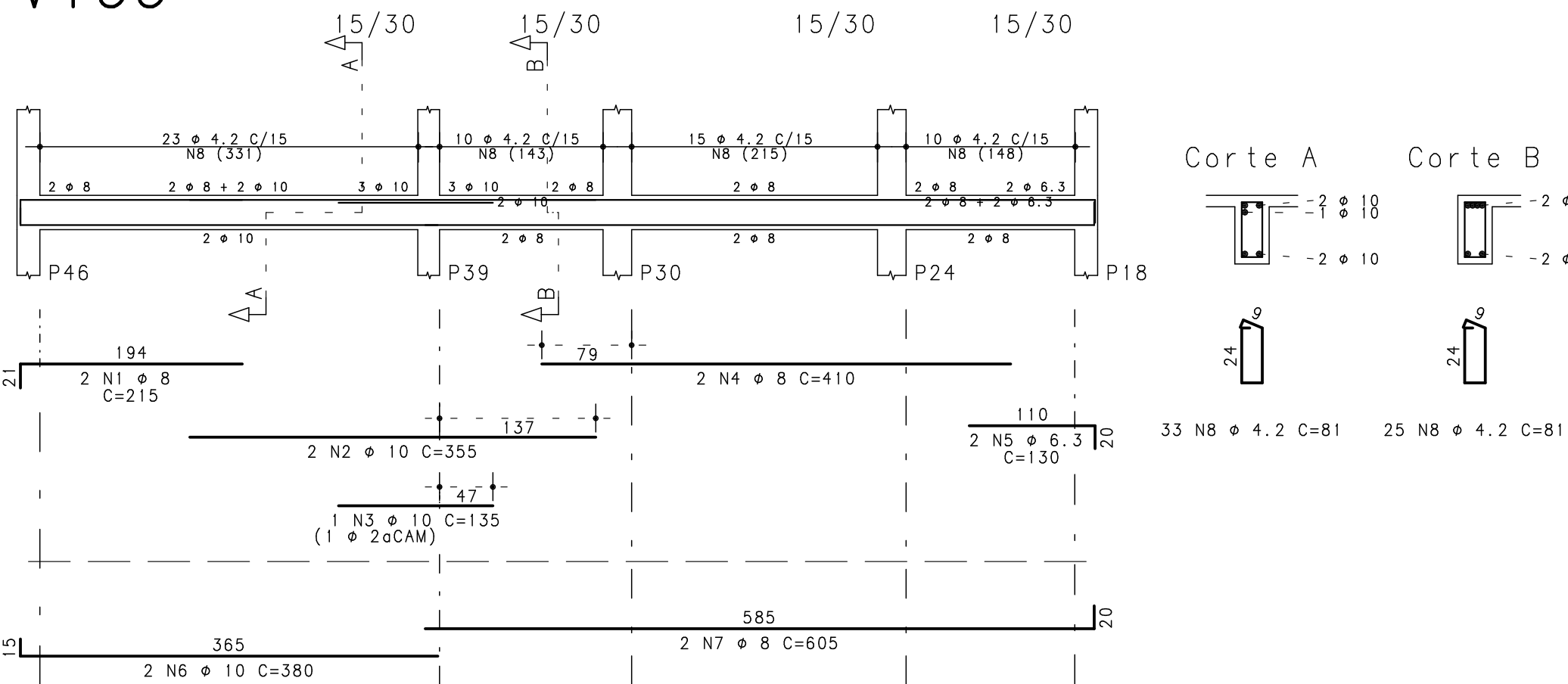
V132



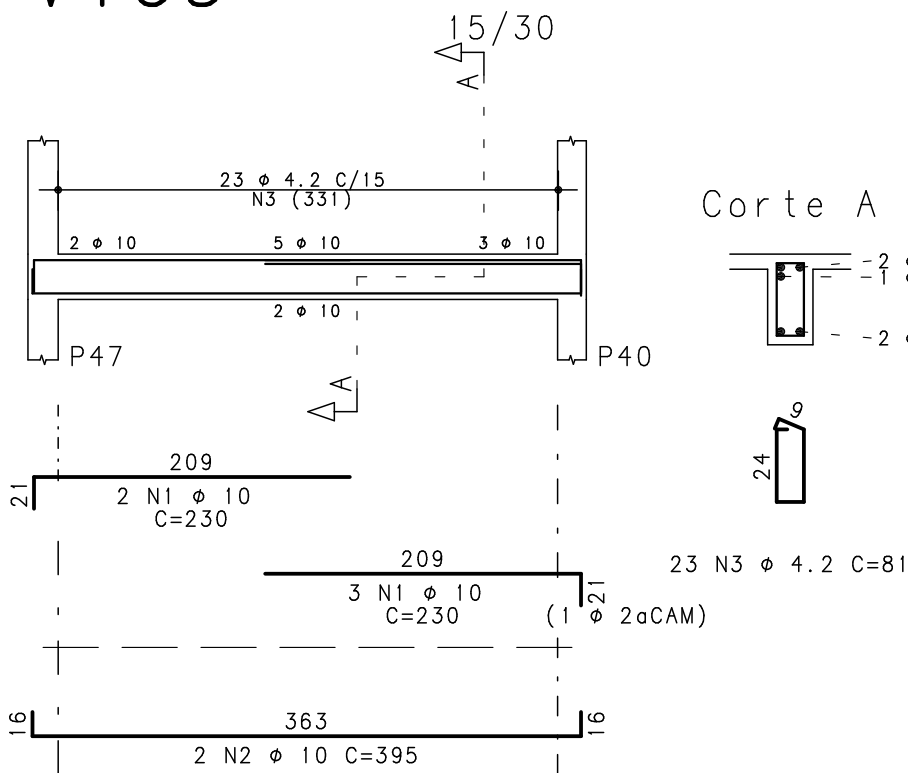
V134



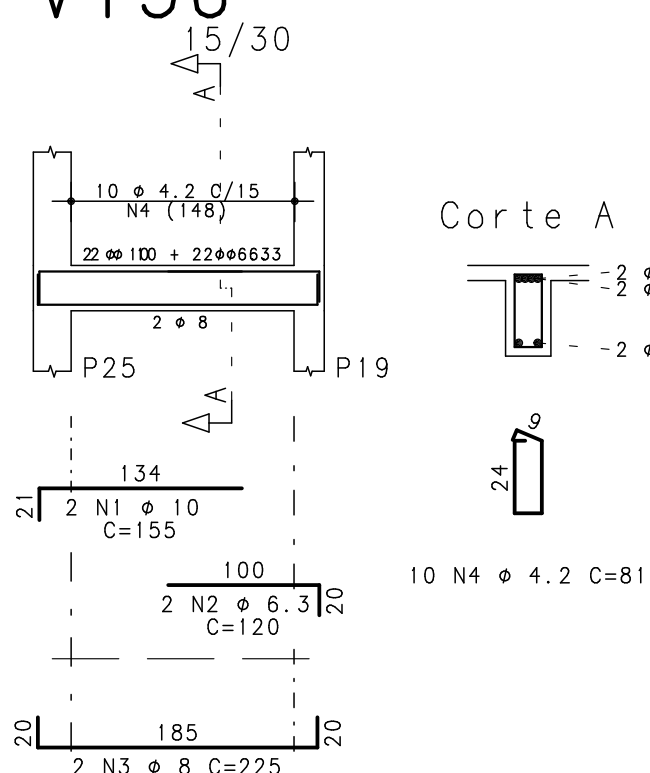
V133



V135



V136



VIGAS	AÇO	POS	BIT (mm)	QUANT	COMPRIMENTO	
					UNIT (cm)	TOTAL (cm)
V124	50A	1	8	4	200	800
	50A	2	10	2	355	710
	50A	3	8	2	655	1310
	60B	4	4.2	38	81	3078
V125	50A	1	8	4	200	800
	50A	2	10	2	355	710
	50A	3	8	2	655	1310
	60B	4	4.2	38	81	3078
V126	50A	1	10	2	260	520
	50A	2	8	2	215	430
	50A	3	10	2	425	850
	60B	4	5	24	91	2184
V127	50A	1	10	5	230	1150
	50A	2	10	2	395	790
	60B	3	4.2	23	81	1863
V128	60B	1	5	2	225	450
	50A	2	16	2	320	640
	50A	3	10	2	170	340
	50A	4	10	2	620	1240
V129	50A	1	10	2	755	1510
	50A	2	8	2	200	400
	50A	3	10	2	280	560
	50A	4	8	2	305	610
V130	50A	5	10	2	330	660
	60B	6	5	54	91	4914
V131	60B	1	5	2	275	550
	50A	2	8	4	120	480
	50A	3	10	3	450	1350
	60B	4	4.2	27	81	2187
V132	60B	1	5	2	275	550
	50A	2	8	4	120	480
	50A	3	10	2	450	900
	50A	4	10	2	305	610
V133	60B	5	4.2	27	81	2187
	50A	1	8	2	215	430
	50A	2	10	2	355	710
	50A	3	10	1	135	135
V134	50A	4	8	2	410	820
	50A	5	6.3	2	130	260
	50A	6	10	2	380	760
	50A	7	8	2	605	1210
V135	60B	8	4.2	58	81	4698
	60B	1	5	2	210	420
	50A	2	8	2	220	440
	60B	3	4.2	11	81	891
V136	50A	1	10	5	230	1150
	50A	2	10	2	395	790
	50A	3	4.2	23	81	1863
	60B	4	4.2	10	81	810

RESUMO AÇO CA 50-60			
AÇO	BIT (mm)	COMPR (m)	PESO (kg)
60B	4.2	271	30
60B	5	95	15
50A	6.3	5	15
50A	8	102	40
50A	10	170	105
50A	16	6	10
Peso Total		60B =	44 kg
Peso Total		50A =	157 kg



Rua Quinze de Novembro, 553/405
Pelotas - RS - CEP 96201-5000
Telefone: (51) 3229-1500
e-mail: fernando@simch.com.br
e-mail: paulo@simch.com.br

Fernando Petrucci Gigante
Eng. Civil - CREA-RS 45232

Paulo Rogério Maffini Simch
Eng. Civil - CREA-RS 78208

2			
1			
0			
Rev	Data	Autor	Assunto

CONCRETO fck = 250 kgf/cm2		SOBRECARGA PREVISTA		OBRA N.º 0001
CLIENTE SECRETARIA DA SAÚDE-PELOTAS		DES. N.º		025
OBRA UBS TIPO 2-CORRIENTES		REV. N.º		00
TÍTULO NÍVEL 100 ARMADURAS DAS VIGAS		ENG.º		
V124 / V125 / V126 / V127 V128 / V129 / V130 / V131 V132 / V133 / V134 / V135 V136		DATA 9/08/2015		ESCALA 1:50
DESENHO UBS-100-VIG-025-R00		COORD.		